

Cambridgeshire Constabulary

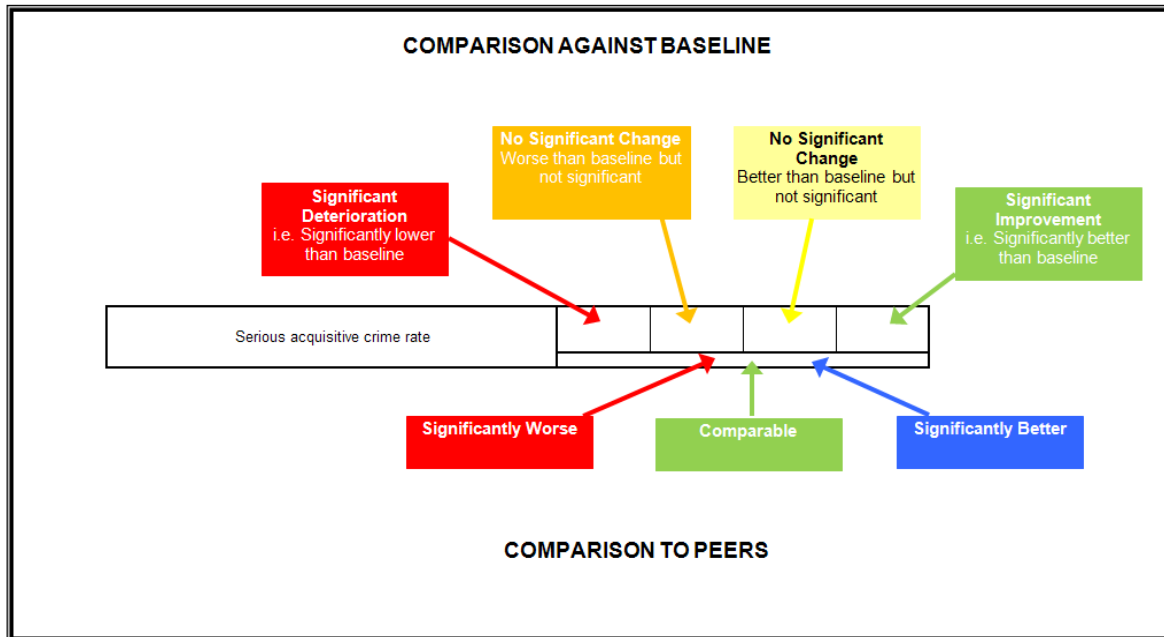
Police Authority Performance Update

October 2011

	Page
Notes	3
Local Policing Plan Indicators	
Improve Public Confidence	4
Deliver a High Quality Service	4-5
Tackle ASB and Crime Effectively	5-10
Performance Indicator Dashboard	11
Confidence and Satisfaction	12
Local Crime and Policing	13-17
Sickness data	18
Call Handling	19-20
Arrests	21
Stop Searches	22
Information sheet	23

NOTES

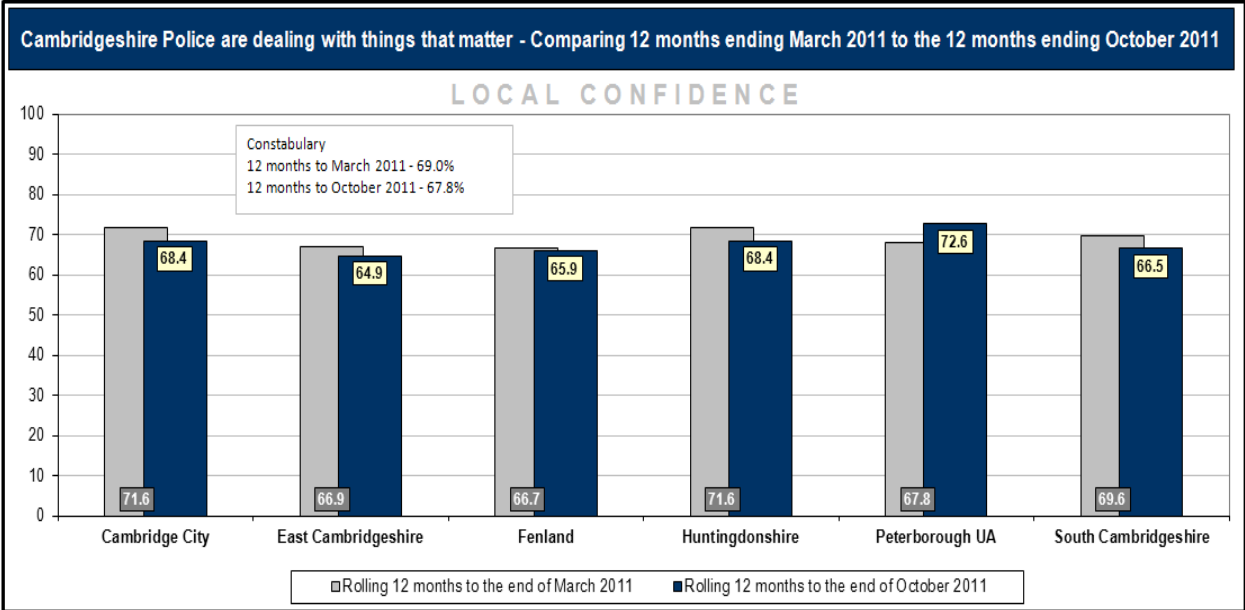
DASHBOARD EXPLANATION



MOST SIMILAR FORCES

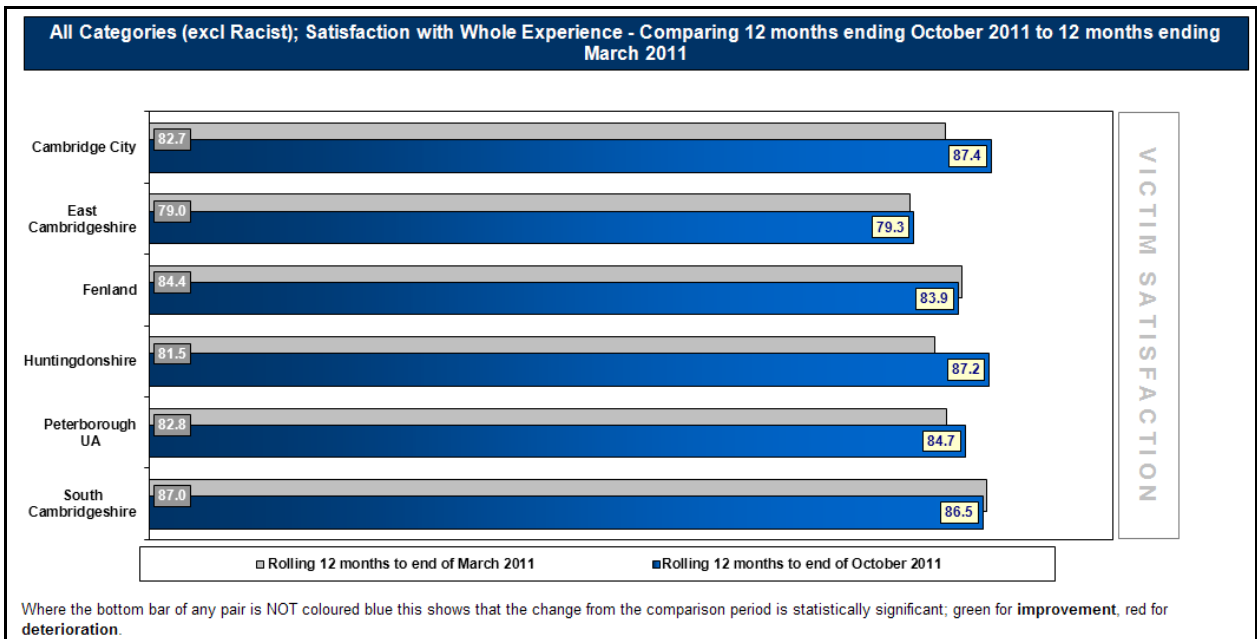
- Avon and Somerset
- Devon and Cornwall
- Essex
- Gloucestershire
- Kent
- Warwickshire
- Wiltshire

IMPROVE PUBLIC CONFIDENCE



Policing in Cambridgeshire Survey data to October 2011

DELIVER A HIGH QUALITY SERVICE



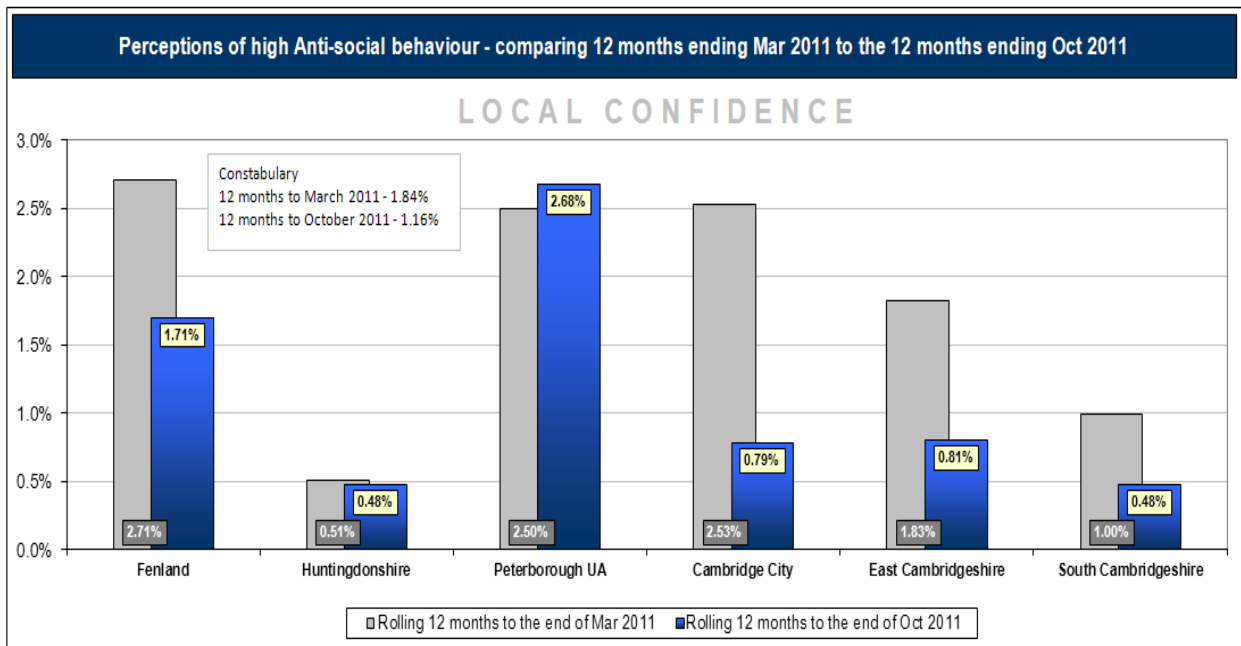
Victim Satisfaction Survey data to October 2011

Satisfaction with service delivery (racist incidents)				
---	--	--	--	--

Victim Satisfaction Survey data to October 2011

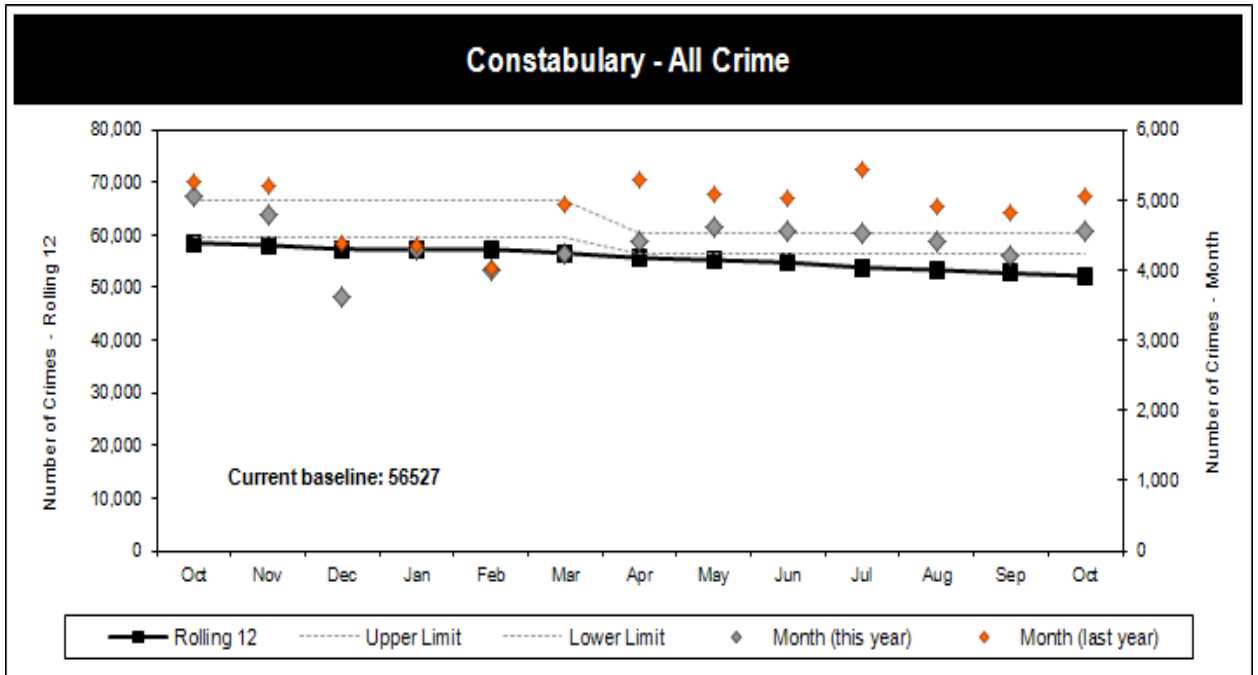
TACKLE ANTI-SOCIAL BEHAVIOUR AND CRIME EFFECTIVELY

Perception of anti-social behaviour				
-------------------------------------	--	--	--	--

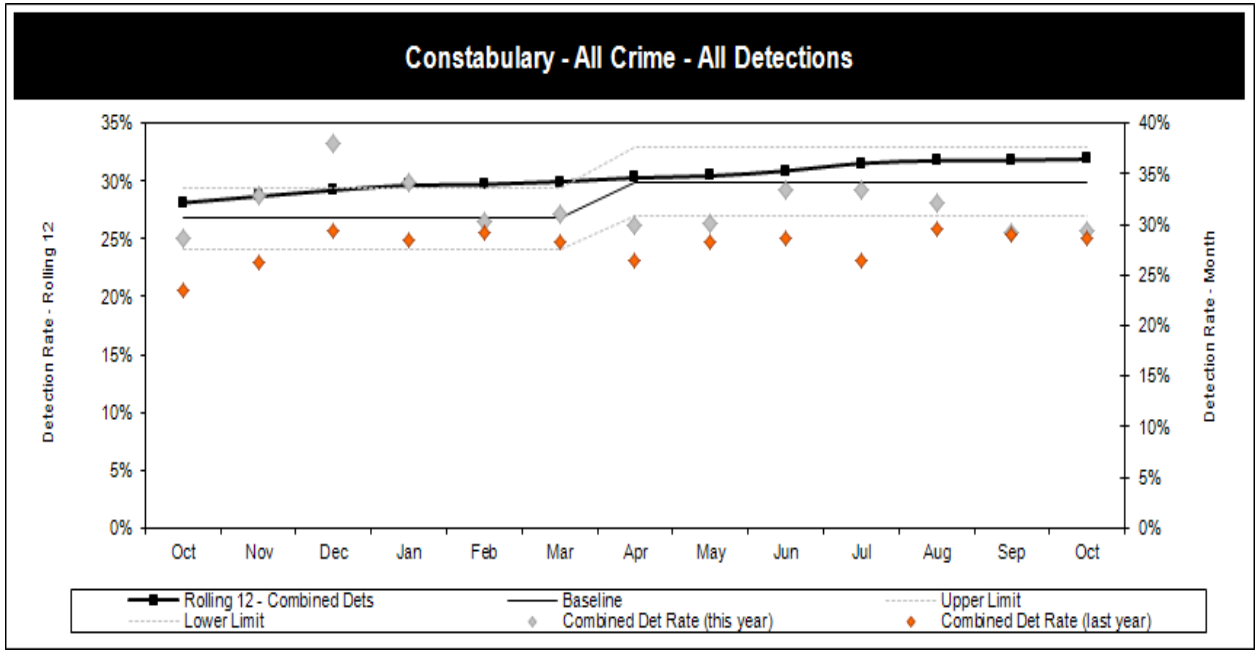


Policing in Cambridgeshire Survey data to October 2011

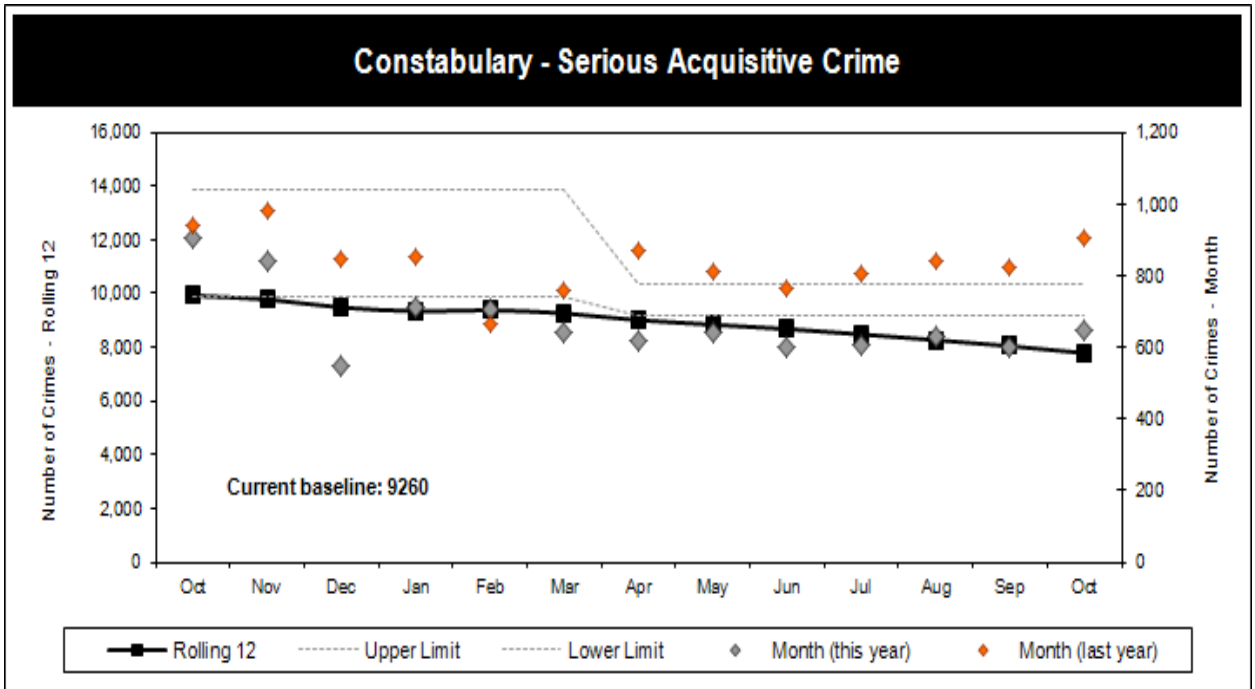
All Crime				
-----------	--	--	--	--



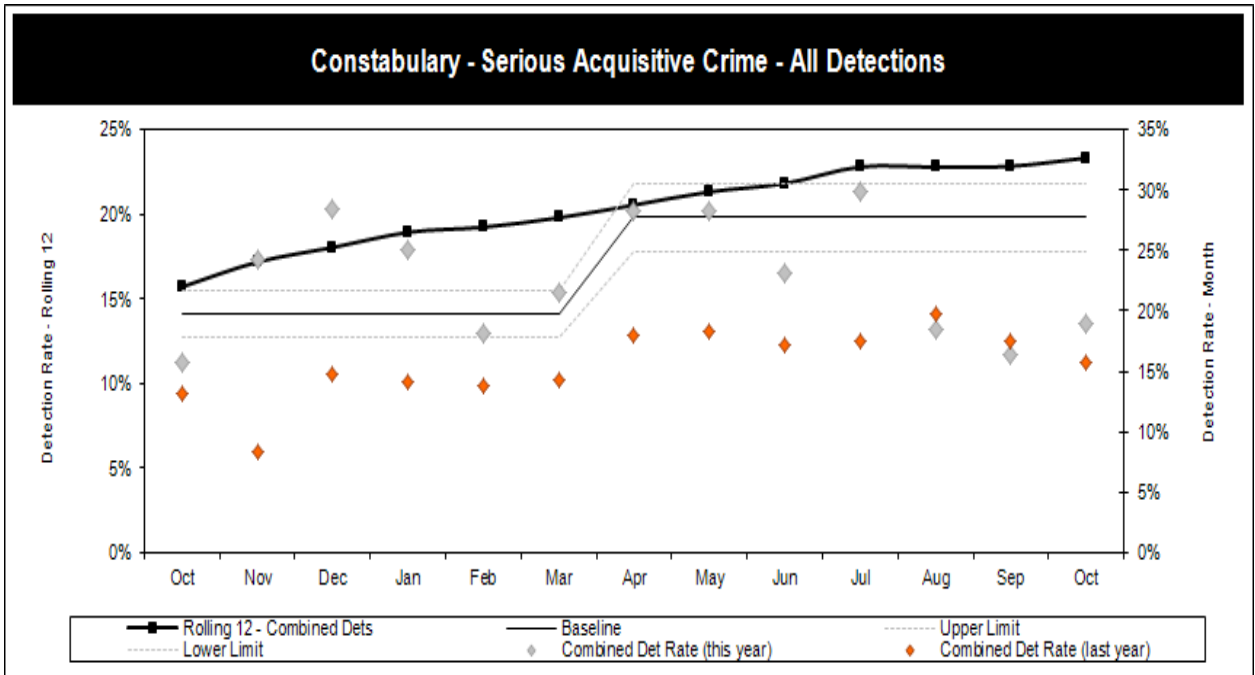
All Detections (including RJs)				
--------------------------------	--	--	--	--



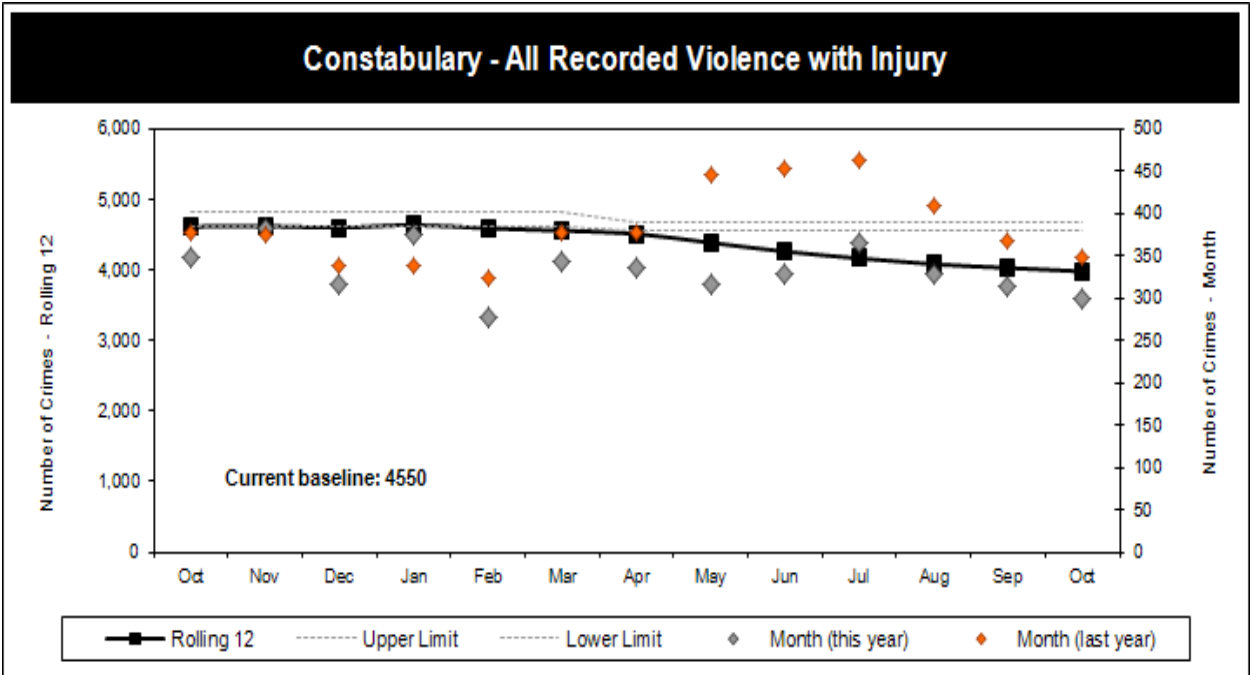
Serious acquisitive crime rate				
--------------------------------	--	--	--	--



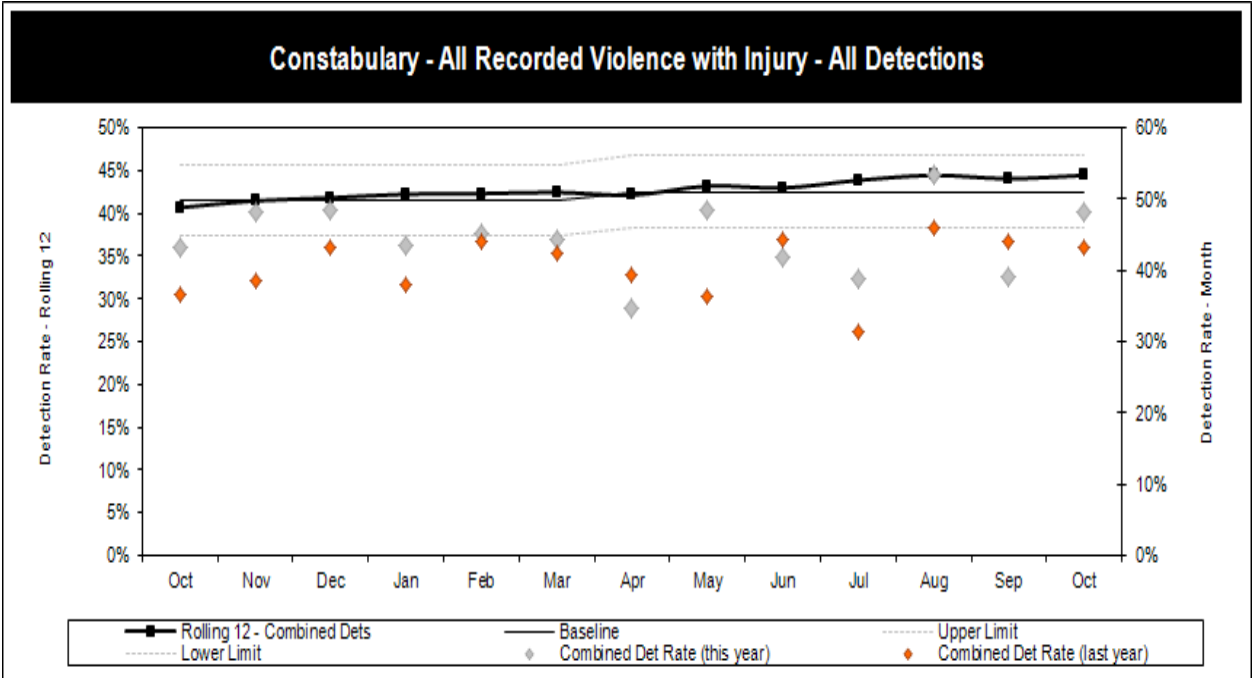
Serious acquisitive detection rate				
------------------------------------	--	--	--	--



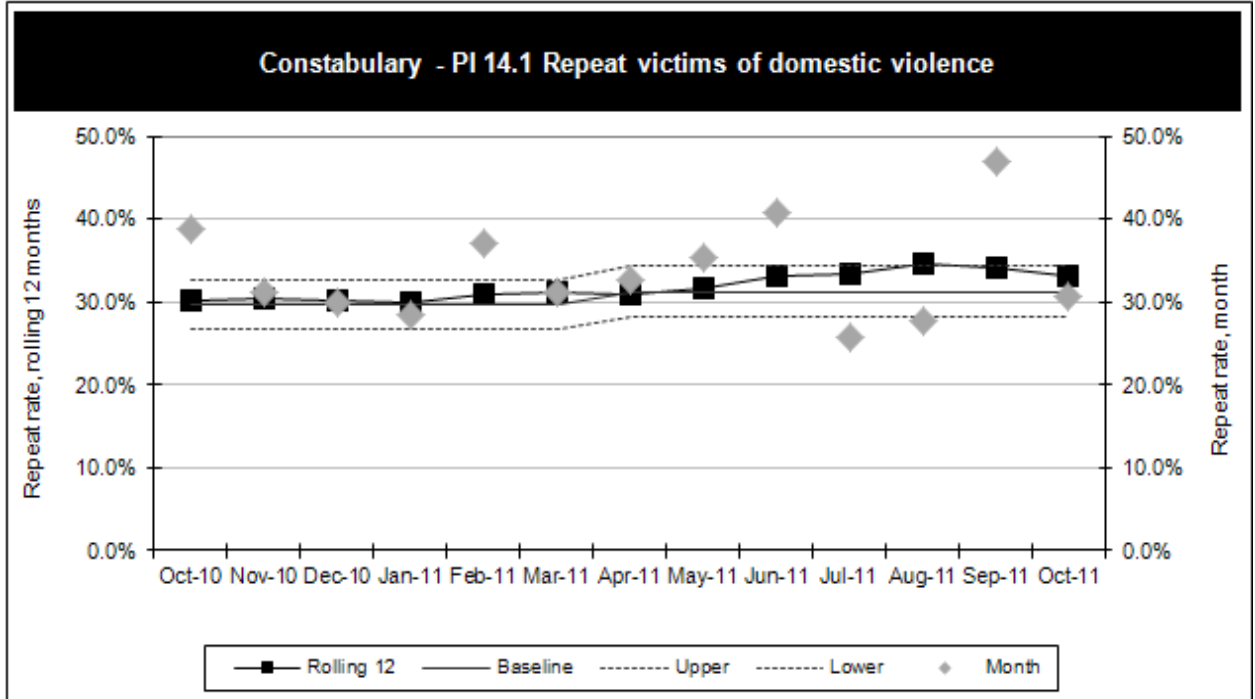
All Recorded Violence with Injury crime rate				
--	--	--	--	--



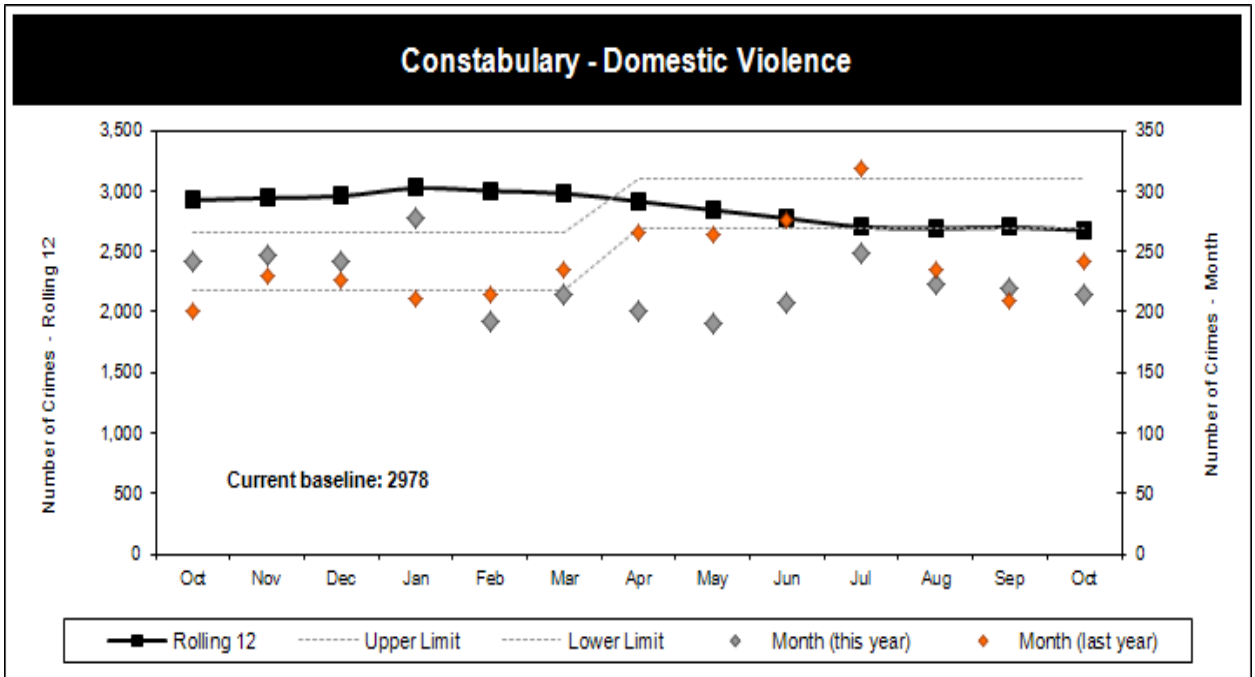
All Recorded Violence with Injury detection rate				
--	--	--	--	--



Repeat victims of domestic violence				
				Not Available

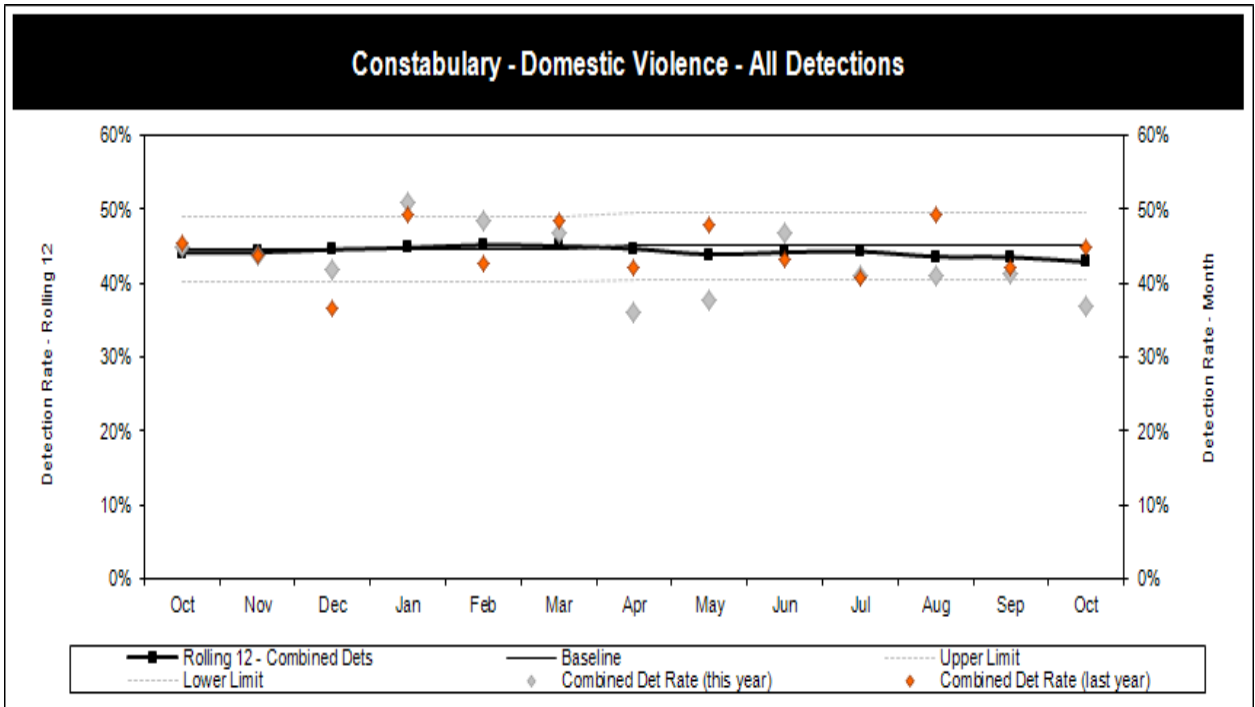


Domestic Violence Crime				
				Not Available

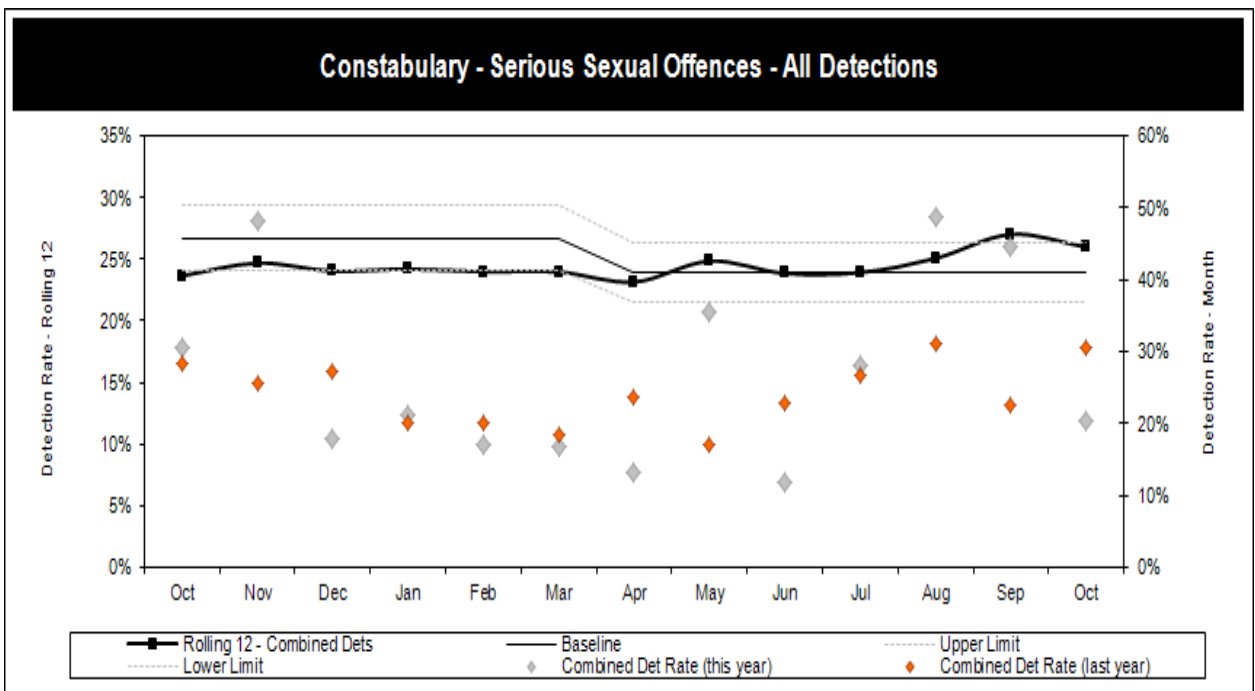


As the Constabulary proactively encourages victims of Domestic Violence to confidently seek our help, an increase in this offence type may not necessarily be a negative indicator.

Domestic Violence Detections	Not Available
------------------------------	---------------



Serious Sexual Offences detection rate	Not Available
--	---------------



PERFORMANCE INDICATOR DASHBOARD

Confidence and Satisfaction				
Indicator			Current Performance	
1.1		PRIORITY INDICATOR	Satisfaction with service delivery (Police)	
			Satisfaction with Police Follow Up	
			Satisfaction with Police Actions	
1.2			Comparative satisfaction with service delivery (Police)	Comparable
1.3			Satisfaction with service delivery (racist incidents)	

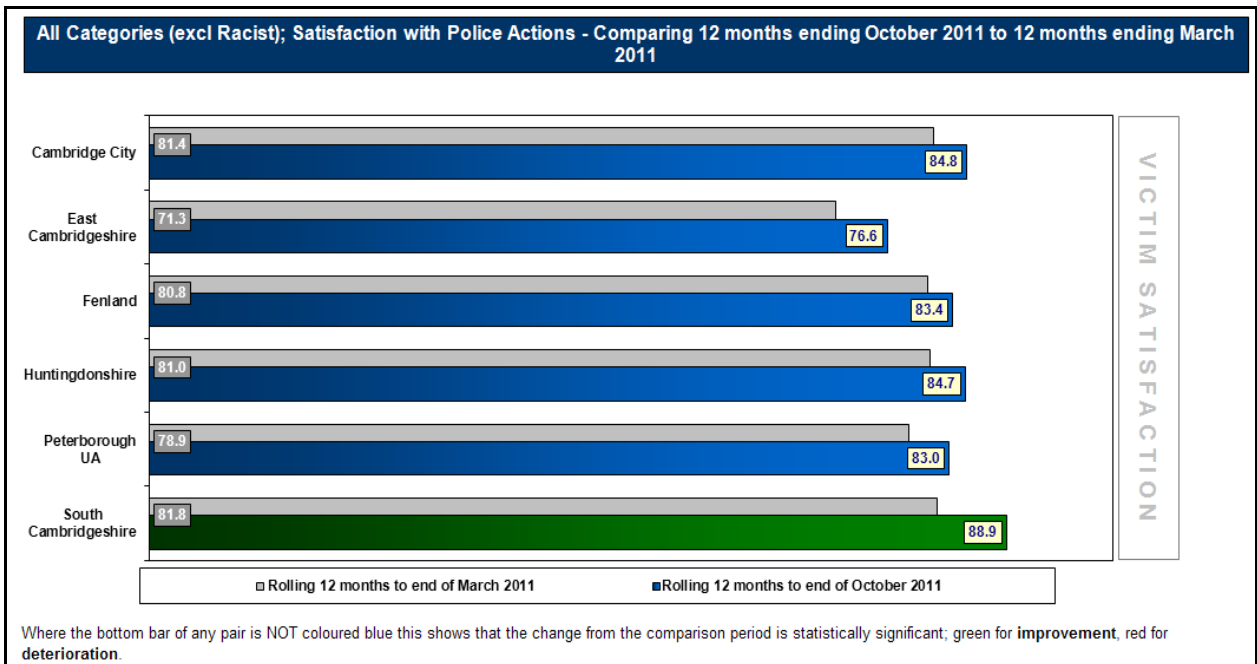
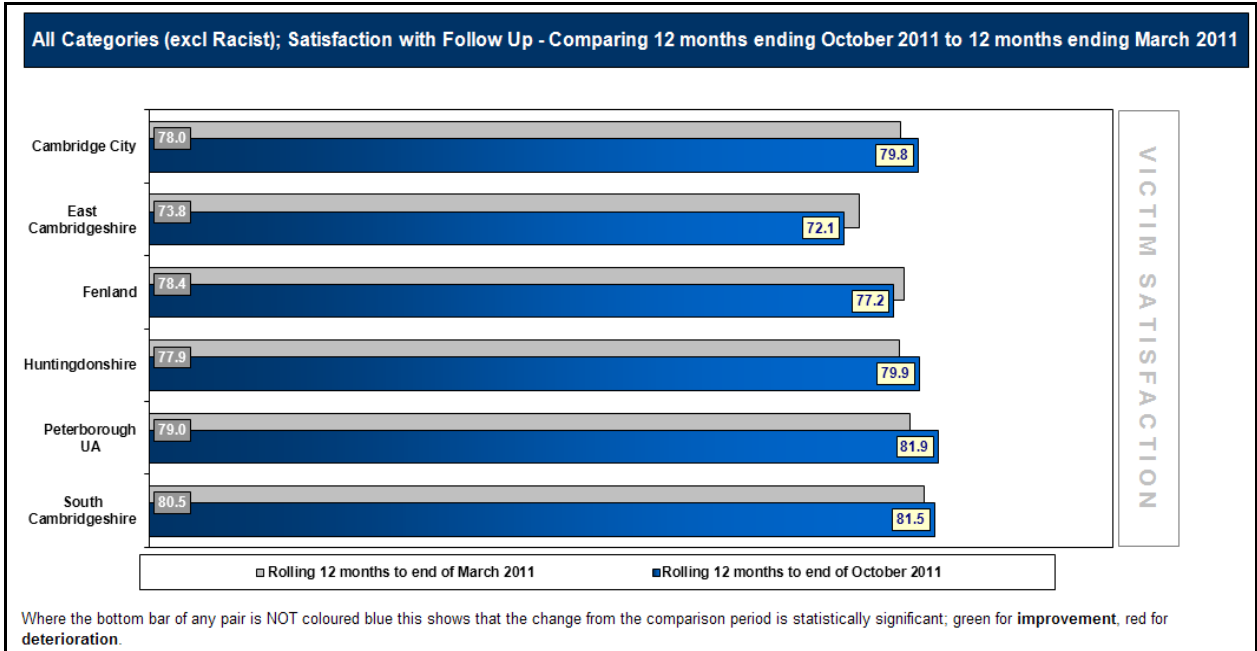
Local Crime and Policing				
			BCS Comparator crime rate	
			BCS Comparator detection rate	
5.2	NI 16		Serious acquisitive crime rate	
6.2 (Proxy)			Serious acquisitive detection rate	
PSA 23 (1)			All Recorded Violence with Injury crime rate	
PSA 23(1)			All Recorded Violence with Injury detection rate	
5.1	NI 15		Most Serious Violence crime rate	
6.1 (Proxy)			Most Serious Violence detection rate	
5.3	NI 20		Assaults with less serious injury crime rate	
			Assaults with less serious injury detection rate	
			Other wounding crime rate	
6.3			Racially & religiously aggravated detection rate	
10.1	NI 30		PPO reoffending rate	Cambs LAA - 30.0% reduction y-o-y Peterborough LAA - 43.8% reduction y-o-y
11.1	NI 18		Adult reoffending rate	
11.2	NI 19		Youth reoffending rate	
11.3	NI 111		First time youth offending	
14.1	NI 32	PRIORITY INDICATOR	Repeat victims of domestic violence	 Not Available

Protection from Serious Harm				
5.4	NI 34		Domestic Homicide rate	
5.5	NI 29		Gun crime rate	
5.6	NI 28		Knife crime rate	
6.4 (Proxy)			Serious sexual offences detection rate	
8.1			Asset recovery	
9.1	NI 47		Road traffic casualties	
11.4	NI 38		Drug-related (class A) offending	 Not Available
	NI 35	PRIORITY INDICATOR	Building resilience to domestic extremism	
		PRIORITY INDICATOR	Tackling Organised Crime Groups	

Value for Money and Productivity				
3.1			Minority ethnic police recruitment	 Below national average
3.2			Female police officer representation	 In line with national average
12.1			Police service efficiency	
13.1			Police officer sickness absence rate	 Below national average
13.2			Police staff sickness absence rate	 Above national average

Data as at October 2011

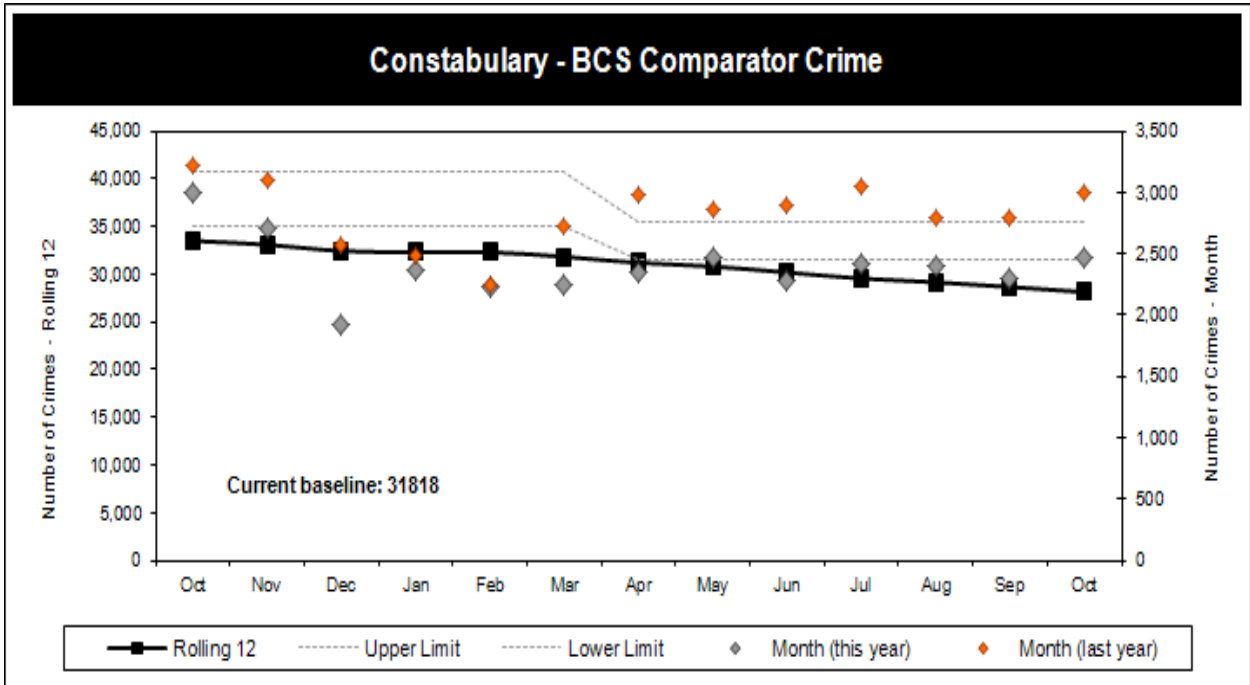
CONFIDENCE AND SATISFACTION



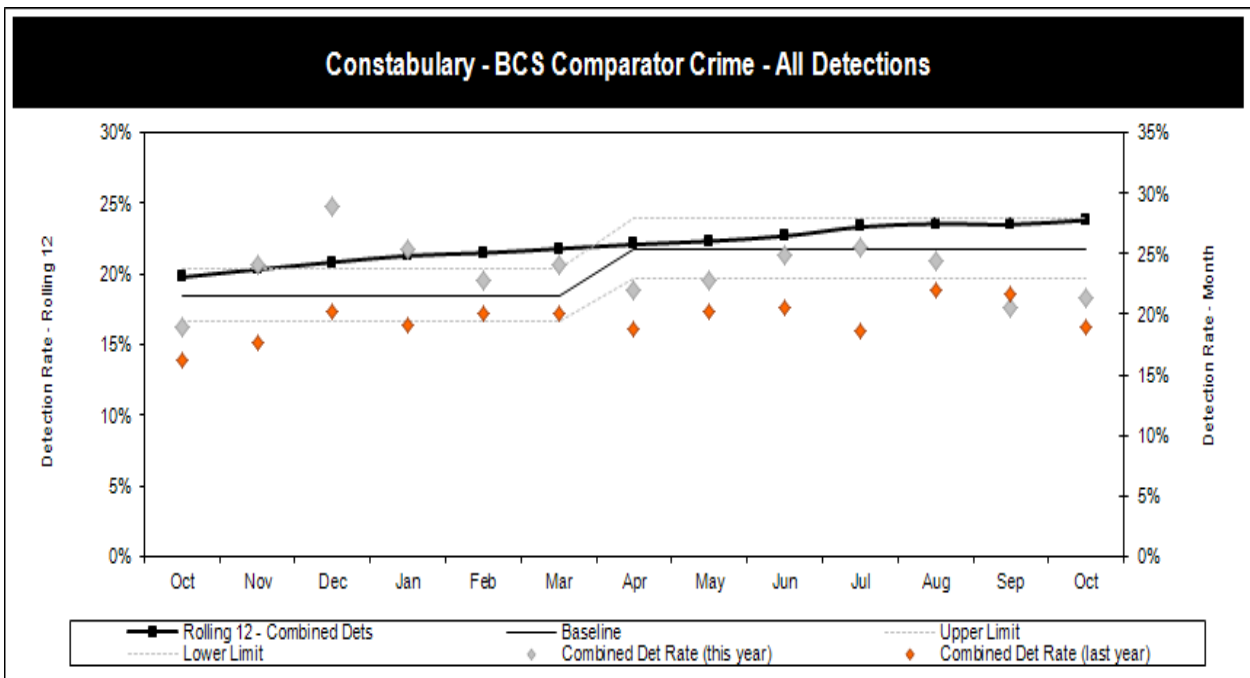
Victim Satisfaction Survey data to October 2011

LOCAL CRIME AND POLICING

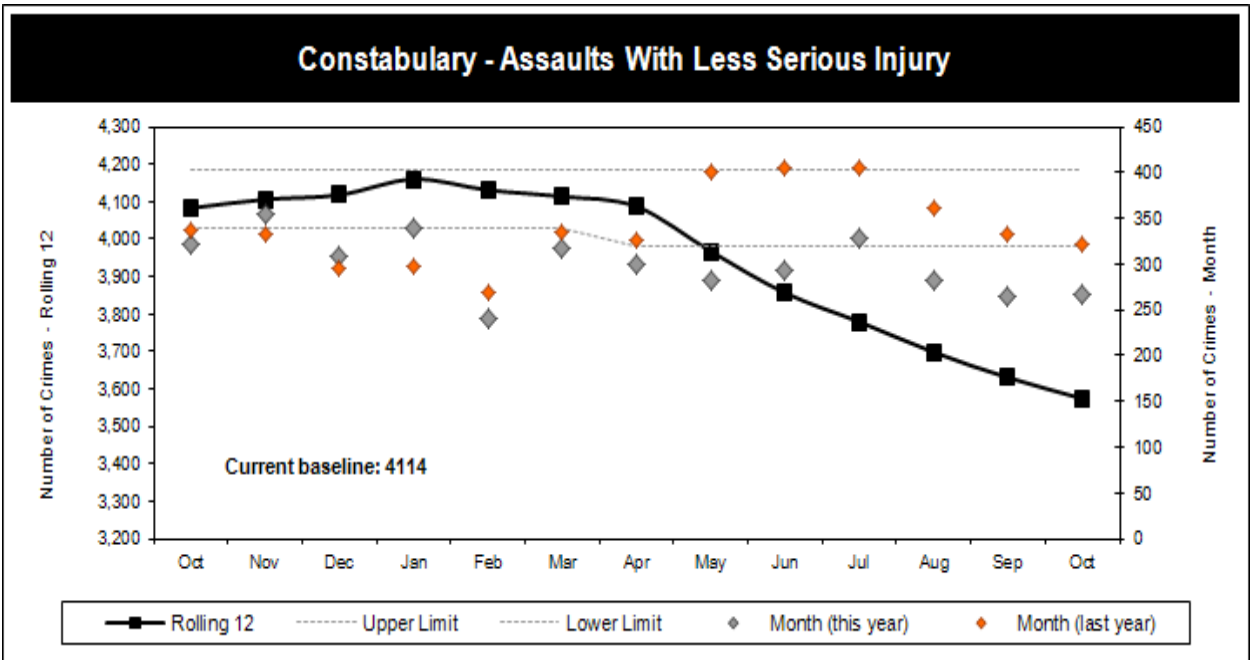
BCS Comparator Crime				
----------------------	--	--	--	--



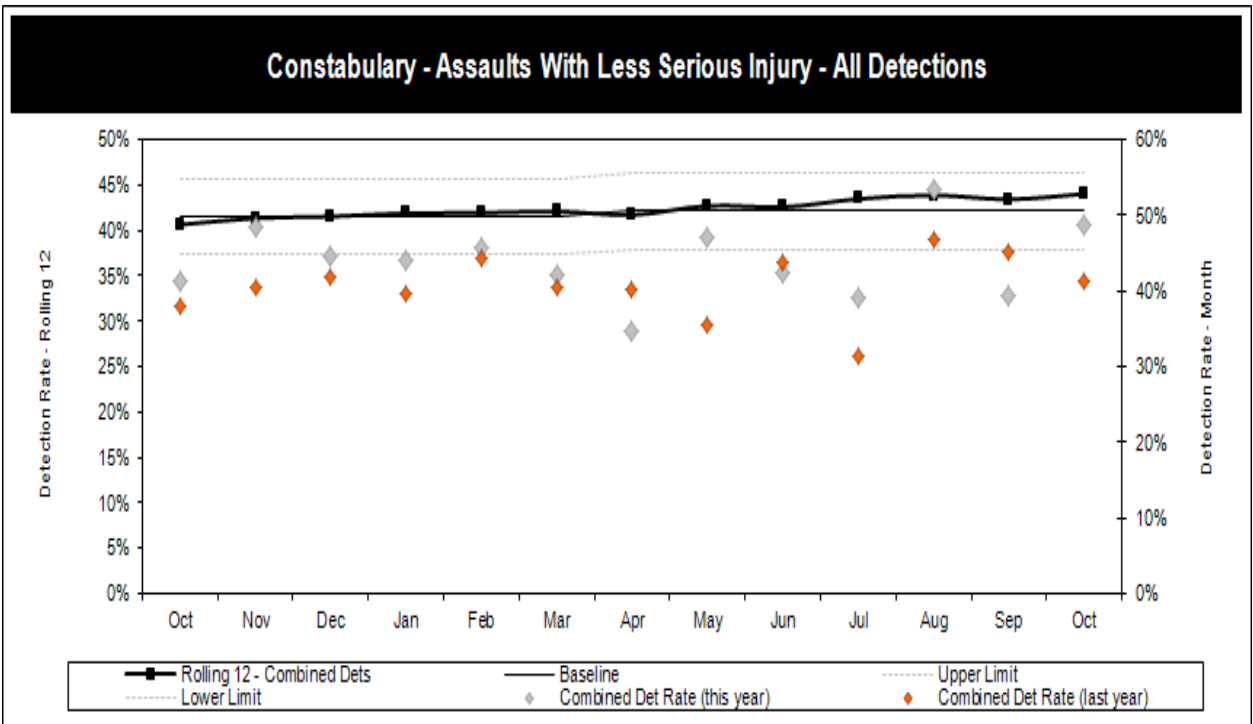
BCS Comparator detection rate				
-------------------------------	--	--	--	--



Assault with less serious injury crime rate

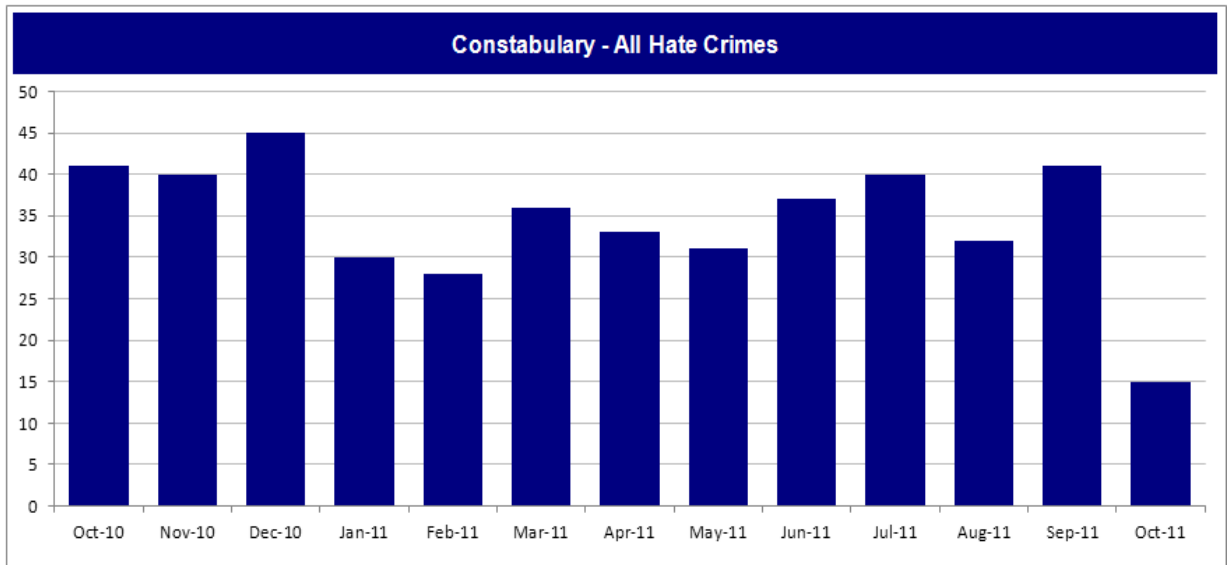
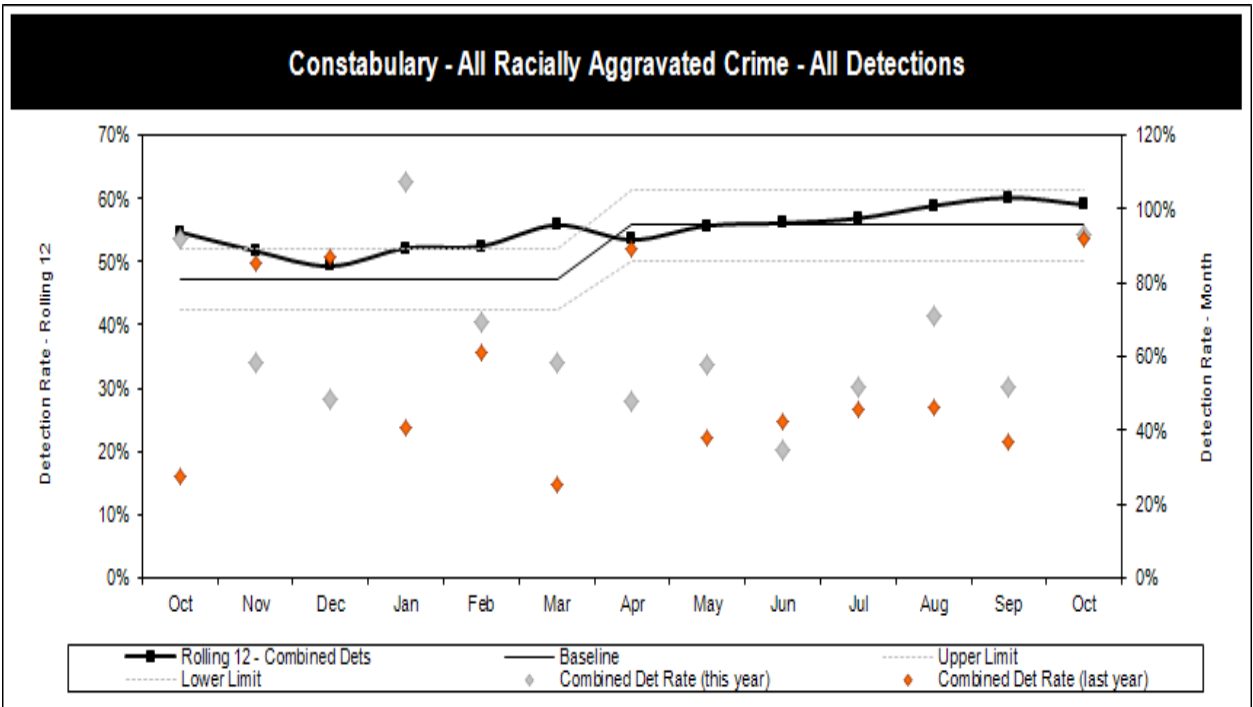


Assault with less serious injury detection rate



NOT PROTECTIVELY MARKED

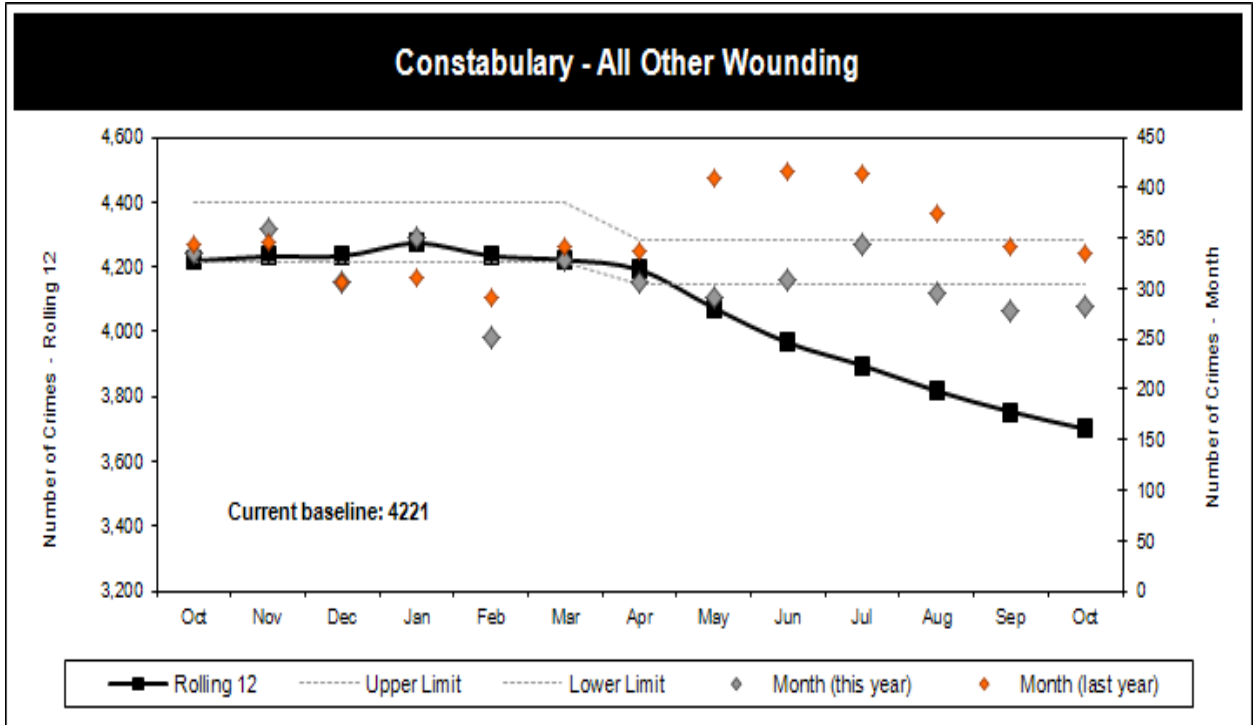
Racially & religiously aggravated detection rate



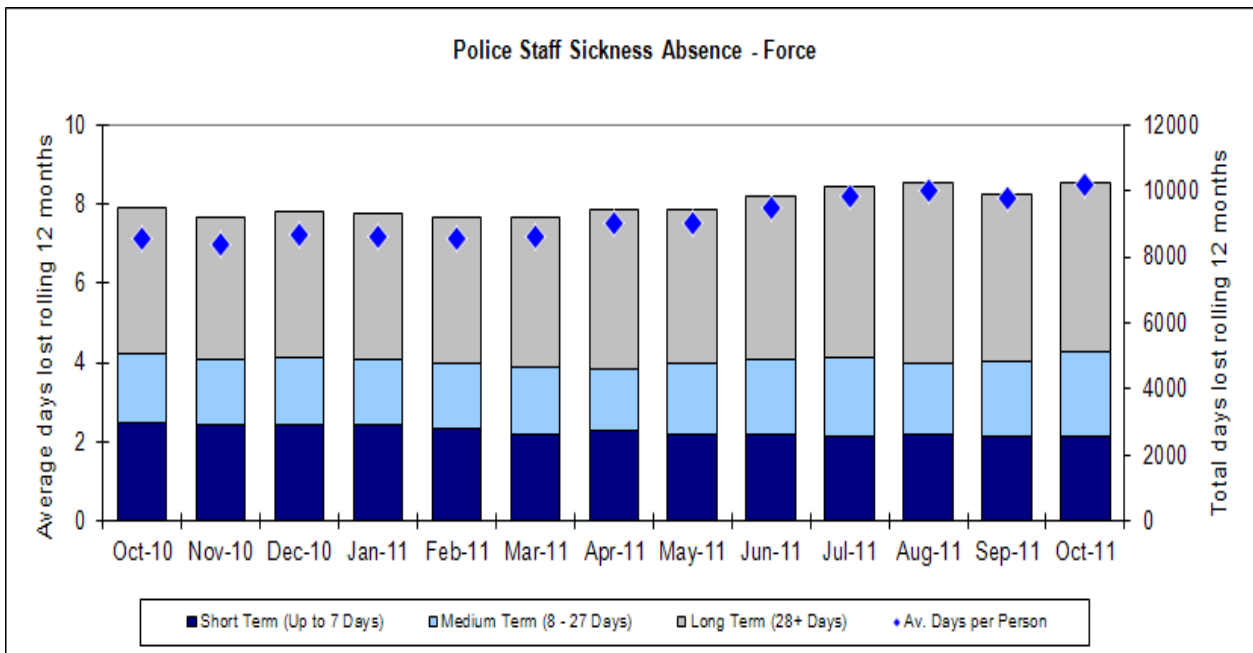
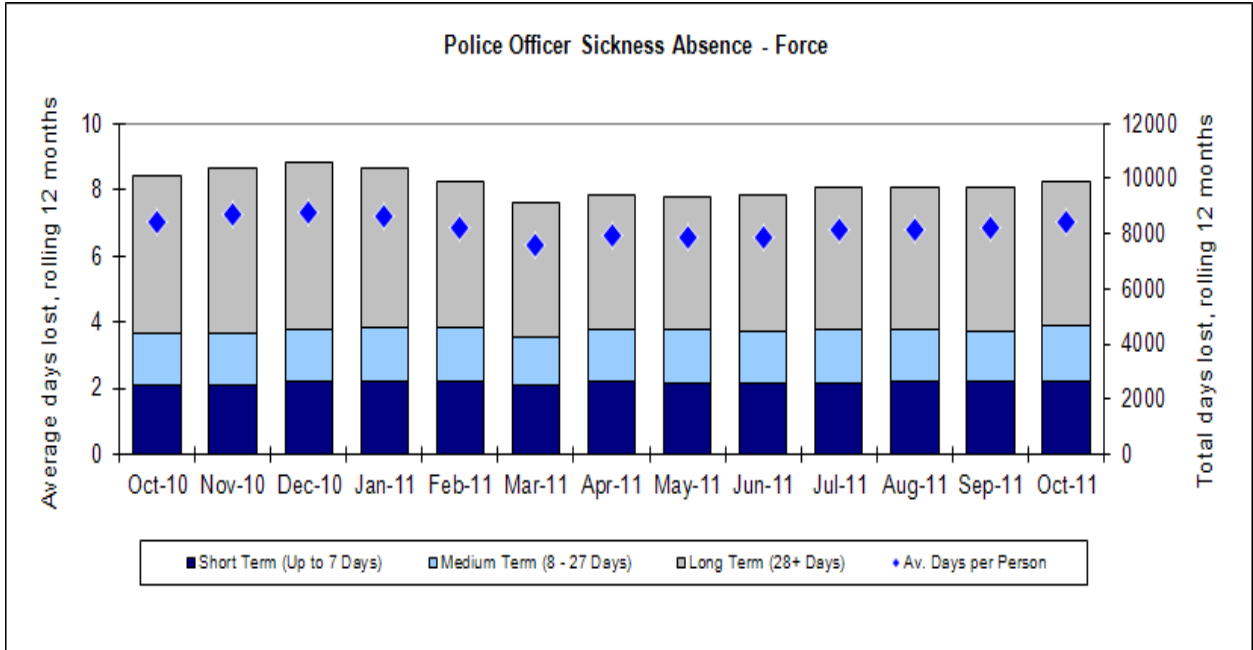
Crime Type	Oct-10	Nov-10	Dec-10	Jan-11	Feb-11	Mar-11	Apr-11	May-11	Jun-11	Jul-11	Aug-11	Sep-11	Oct-11
Racially Agg. Violence	27	30	27	20	22	26	20	22	22	27	21	27	13
Racially Agg. Harassment	0	2	0	0	0	0	0	1	1	1	0	0	0
Racially Agg. Damage	2	1	6	0	1	2	3	1	0	2	3	2	0
Other	12	7	12	10	5	8	10	7	14	10	8	12	2
Total	41	40	45	30	28	36	33	31	37	40	32	41	15

Note: All Crimes raised with a Hate marker

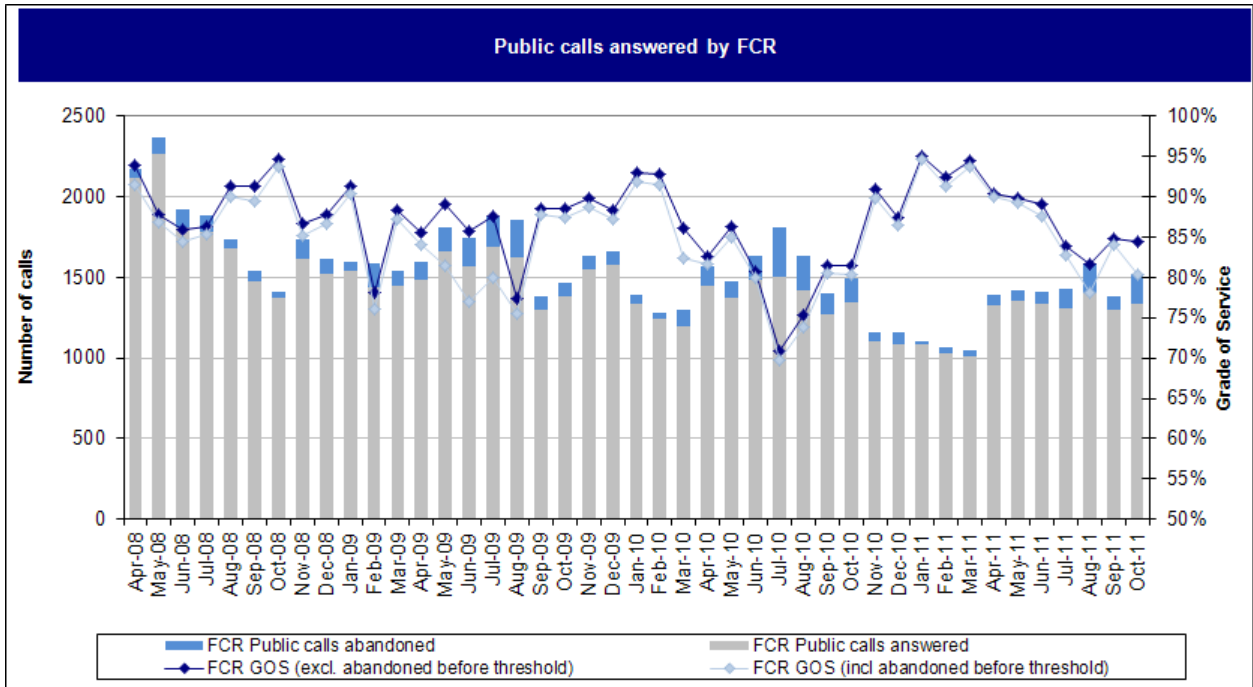
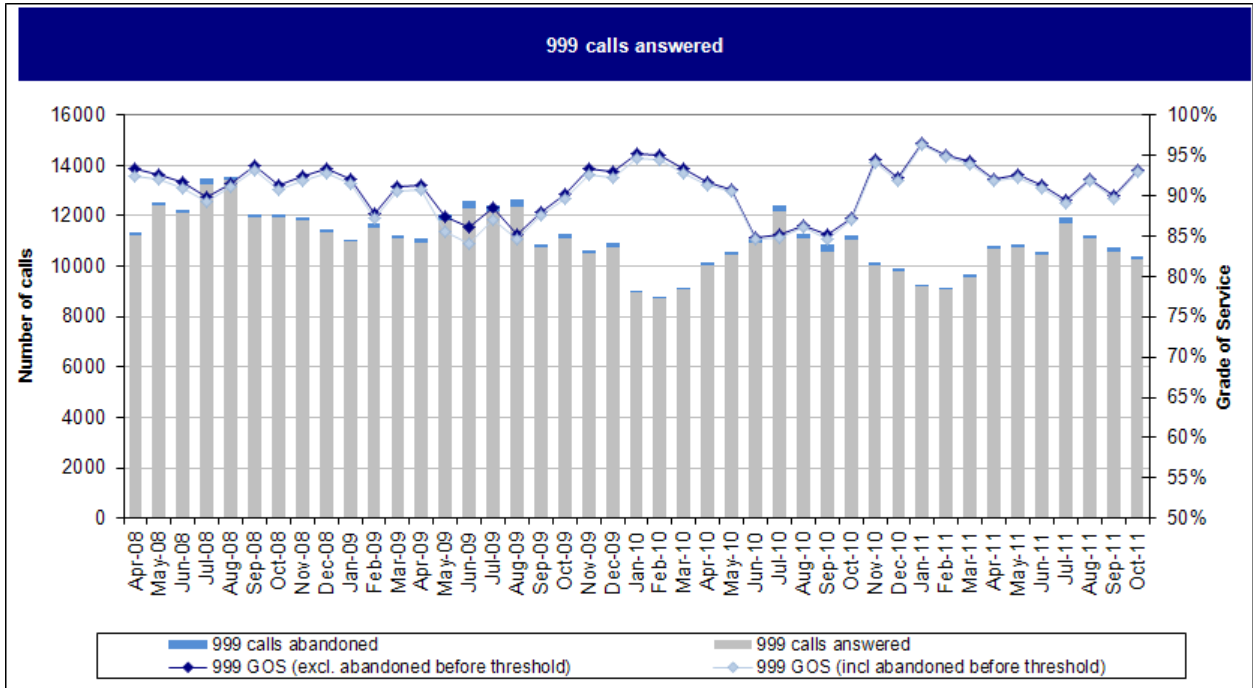
Other Wounding crime rate				
---------------------------	--	--	--	--

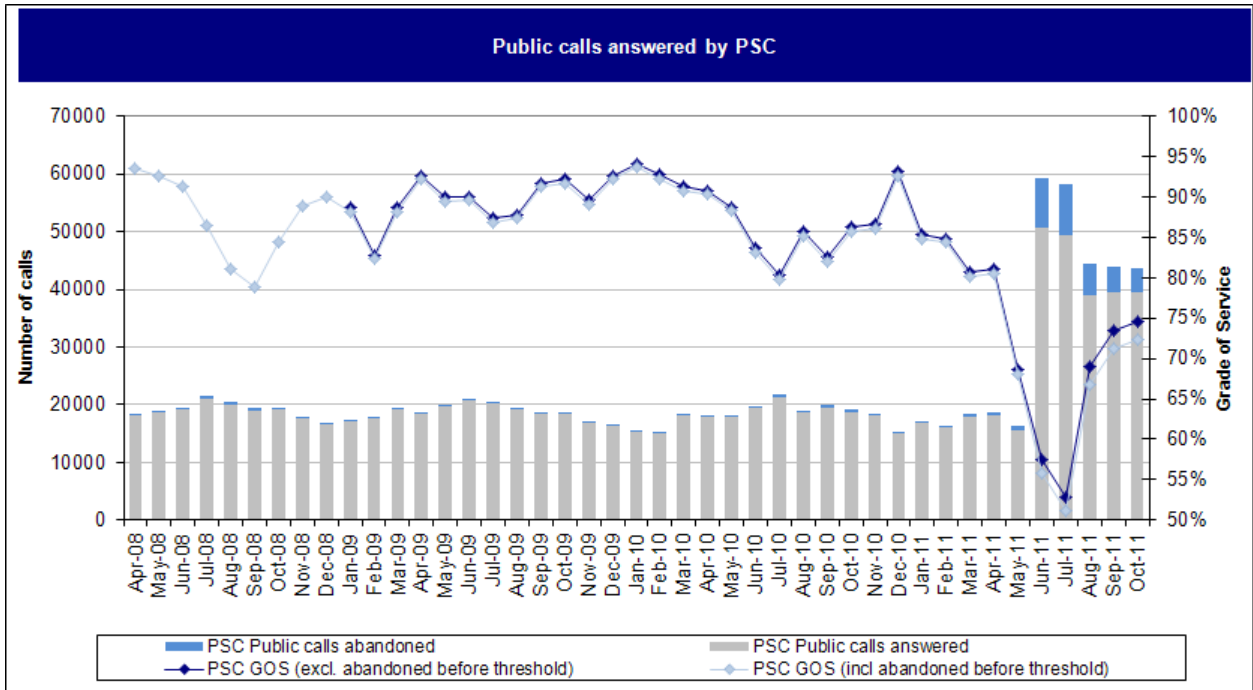


VALUE FOR MONEY AND PRODUCTIVITY

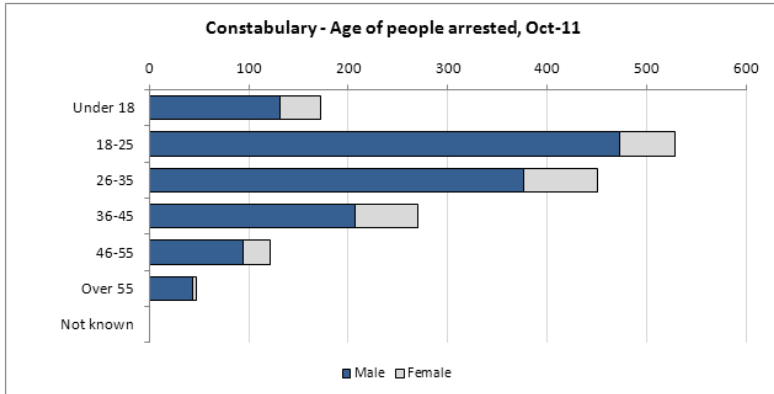


CALL HANDLING

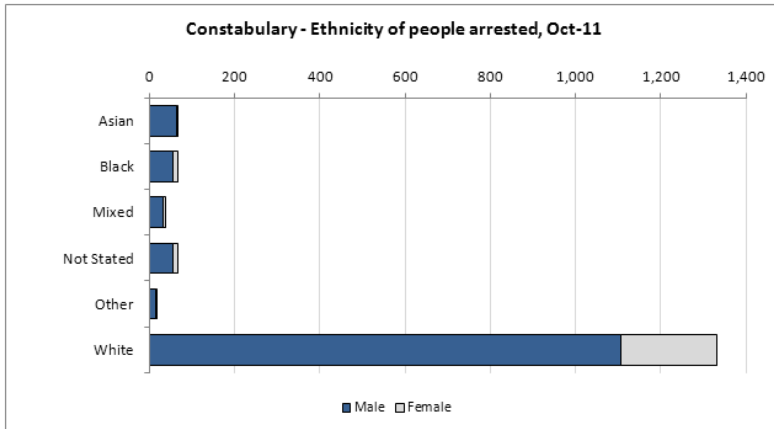




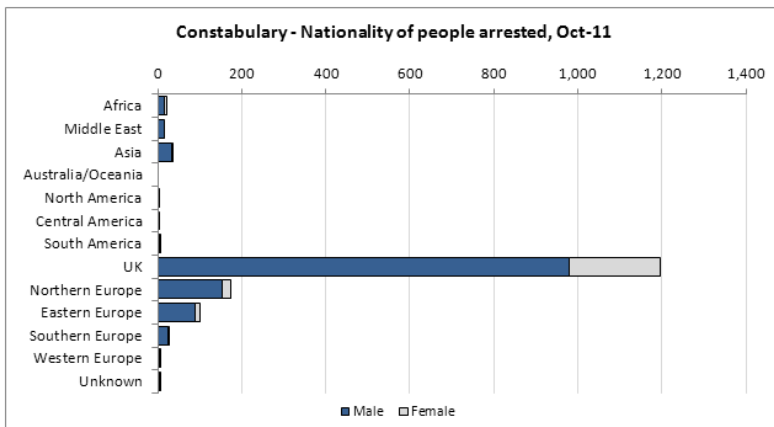
ARRESTS



SUMMARY - AGE		
	Oct-11	Rolling 12 *
Under 18	10.8%	12.7%
18-25	33.3%	32.0%
26-35	28.4%	26.7%
36-45	17.0%	17.8%
46-55	7.6%	7.9%
Over 55	3.0%	2.8%
Not known	0.0%	0.0%
TOTAL ARRESTS	1,590	21,023
<i>Juveniles</i>	6.5%	7.8%



SUMMARY - ETHNICITY		
	Oct-11	Rolling 12 *
Asian	4.2%	4.9%
Black	4.2%	4.3%
Mixed	2.5%	2.9%
Not Stated	4.3%	5.1%
Other	1.1%	0.9%
White	83.8%	81.9%
TOTAL ARRESTS	1,590	21,023

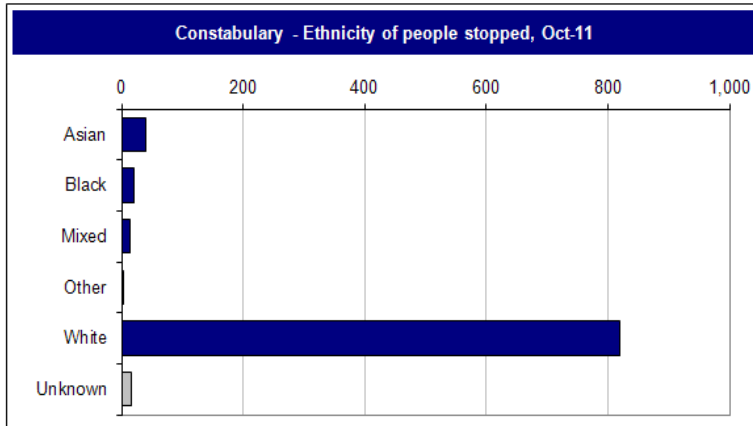


SUMMARY - NATIONALITY		
	Oct-11	Rolling 12 *
Africa	1.3%	1.8%
Middle East	0.9%	0.8%
Asia	2.3%	2.0%
Australia/Oceania	0.0%	0.0%
North America	0.1%	0.3%
Central America	0.1%	0.2%
South America	0.3%	0.1%
Total America	0.5%	0.5%
UK	75.2%	77.0%
Northern Europe	10.9%	9.6%
Eastern Europe	6.3%	6.2%
Southern Europe	1.8%	1.6%
Western Europe	0.5%	0.3%
Europe (excl UK)	19.5%	17.6%
Europe (incl UK)	94.7%	94.6%
Unknown	0.3%	0.3%

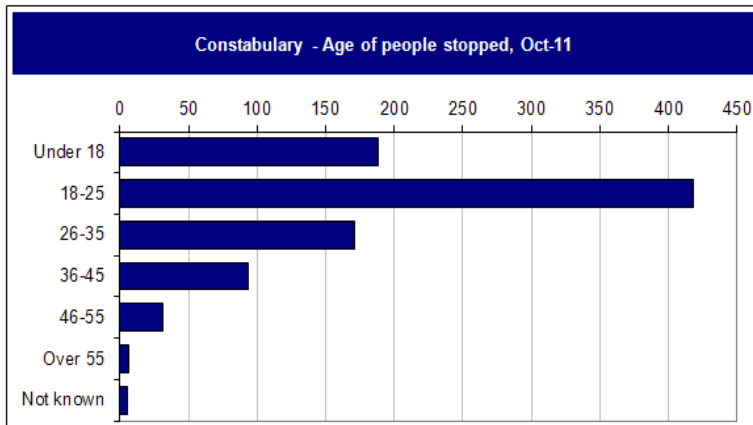
* Current rolling 12 months to Oct-11

Data from NSPIS Custody

STOP SEARCHES



SUMMARY - ETHNICITY		
	Oct-11	Rolling 12 *
Asian	4.4%	5.2%
Black	2.2%	2.9%
Mixed	1.5%	2.4%
Other	0.2%	0.4%
White	89.9%	86.5%
Unknown	1.8%	2.7%



SUMMARY - Age		
	Oct-11	Rolling 12 *
Under 18	20.6%	22.6%
18-25	45.8%	43.6%
26-35	18.8%	19.0%
36-45	10.2%	9.5%
46-55	3.4%	3.1%
Over 55	0.7%	0.9%
Not known	0.5%	1.1%

* Current rolling 12 months to Oct-11

Data from Stop Search database

INFORMATION SHEET

LOCAL POLICING PLAN INDICATORS

	Indicator Name	Data used	Peer comparison data (iQuanta)
Improve Public Confidence	Dealing with local concerns (police)	Policing in Cambridgeshire survey data (conducted via telephone interviews). Data to October 2011.	Data to June 2011
	PI 1.1 Satisfaction with service delivery (police)	Victim satisfaction surveys (conducted via telephone interviews). Data to October 2011	Data to June 2011
Deliver a high quality service	PI 1.3 Satisfaction with service delivery (racist incidents)	Victim satisfaction surveys (conducted via telephone interviews). Data to October 2011	Data to June 2011
	PI 4.1 Perception of anti-social behaviour	Policing in Cambridgeshire survey data (conducted via telephone interviews). Data to October 2011.	Data to March 2011
Tackle anti-social behaviour and crime effectively	Total crime rate	Police recorded crime. Data to October 2011	Data to October 2011
	Total detection rate	Police recorded crime. Data to October 2011	Data to October 2011
	PI 5.2 Serious acquisitive crime rate	Police recorded crime. Data to October 2011	Data to October 2011
	PI 6.2 Serious acquisitive detection rate	Police recorded crime. Data to October 2011	Data to October 2011
	PSA 23 (1) All Recorded Violence with Injury crime rate	Police recorded crime. Data to October 2011	Data to October 2011
	PSA 23 (1) All Recorded Violence with Injury detection rate	Police recorded crime. Data to October 2011	Data to October 2011
	Repeat victims of domestic violence	MARAC data to October 2011	n/a
	Domestic Violence crime rate	Police recorded crime. Data to October 2011	n/a
	Domestic Violence detection rate	Police recorded crime. Data to October 2011	n/a
	PI 6.4 (Proxy) Serious sexual offences detection rate	Police recorded crime. Data to October 2011	Data to October 2011

OTHER PERFORMANCE INDICATORS

	Indicator Name	Data used	Peer comparison data (iQuanta)
Confidence and Satisfaction	Satisfaction with Police Follow Up	Victim satisfaction surveys (conducted via telephone interviews). Data to October 2011	Data to June 2011
	Satisfaction with Police Actions	Victim satisfaction surveys (conducted via telephone interviews). Data to October 2011	Data to June 2011
Local Crime and Policing	BCS Comparator crime rate	Police recorded crime. Data to October 2011	Data to October 2011
	BCS Comparator detection rate	Police recorded crime. Data to October 2011	Data to October 2011
	PI 5.1 Most Serious Violence crime rate	Police recorded crime. Data to October 2011	Data to October 2011
	PI 6.1 (Proxy) Most Serious Violence detection rate	Police recorded crime. Data to October 2011	Data to October 2011
	PI 5.3 Assaults with less serious injury crime rate	Police recorded crime. Data to October 2011	Data to October 2011
	Assaults with less serious injury detection rate	Police recorded crime. Data to October 2011	Data to October 2011
	PI 6.3 Racially & religiously aggravated detection rate	Police recorded crime. Data to October 2011	Data to October 2011
	Hate Crimes	Police recorded crime. Data to October 2011	n/a
Value for Money and Productivity	Other wounding crime rate	Police recorded crime. Data to October 2011	Data to October 2011
	PI 13.1 Police officer sickness absence rate	Sickness data from ORIGIN. Data to October 2011	Data to March 2011
	PI 13.2 Police staff sickness absence rate	Sickness data from ORIGIN. Data to October 2011	Data to March 2011
Call Handling	999 calls answered	Call handling data. Data to October 2011	n/a
	Public calls answered by FCR	Call handling data. Data to October 2011	n/a
	Public calls answered by PSC	Call handling data. Data to October 2011	n/a
Arrests	Age, ethnicity and nationality of detainees	Data from NSPIS Custody. Data to October 2011	n/a
Stop Search	Age and ethnicity of people stop searched	Data from Stop Search database. Data to October 2011	n/a